

*« When we seek for connection,  
we restore the world to  
wholeness.  
Our seemingly separate lives  
become meaningful  
as we discover how truly  
necessary we are »*

**MIDDLESEX HOSPITAL ALLIANCE**

**FOUR COUNTIES HEALTH SERVICES**  
1824 Concession Drive  
Newbury Ontario  
(519) 693-4441

**To contact any of our On Call Spiritual Care Providers:**  
**Call 519.693.4441 Extension 2432**

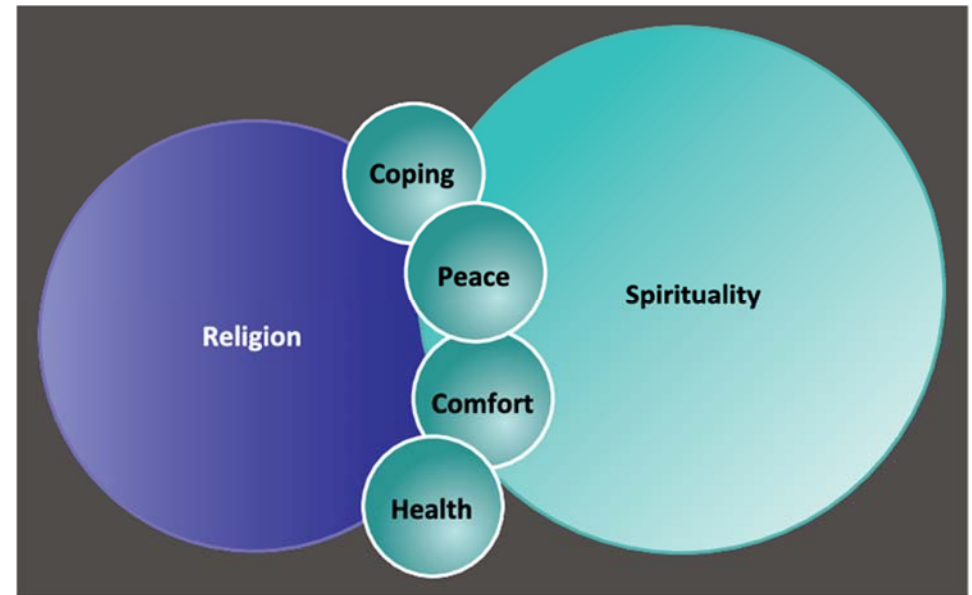
The staff member will need to know which of our Spiritual Care providers you would like to have contact you. You will be asked to provide your name, and telephone number.

# What is Spiritual Care?

## Definition

That care which **recognizes** and **responds** to the needs of the **human spirit** when faced with trauma, ill health or sadness and can include the **need for meaning**, for **self worth**, to **express oneself**, for **faith support**, perhaps for rites or prayer or sacrament, or simply for a sensitive listener. Spiritual care **begins** with encouraging human contact in compassionate relationship, and moves in **whatever direction need requires**.

The Volunteer Spiritual Care providers at Four Counties Health Services are important members of our healthcare team, providing emotional and spiritual care to patients and their families, as well as our staff. They draw upon religious tradition, ritual, prayer, scripture, and sacraments to assist persons in meeting their particular needs. Our Volunteer Spiritual Care Providers will talk with patients and families directly, or help them find a spiritual care provider from their own unique faith needs and traditions.



*You might benefit by having a non-judgemental, non-medical professional provide some guidance, so that you can cope with whatever is ahead:*

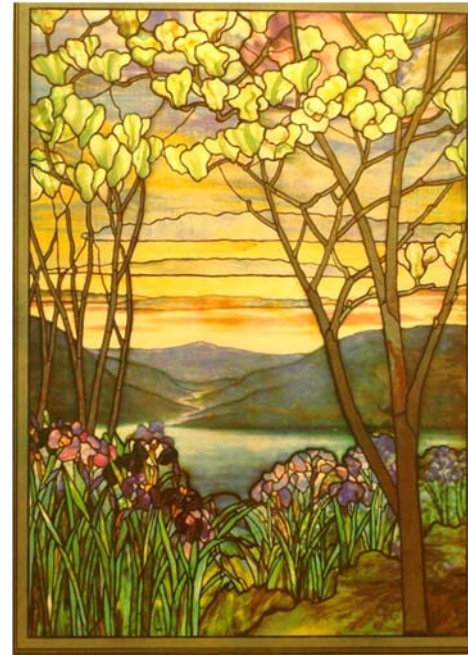
- ⇒ Having your feelings acknowledged and validated
- ⇒ Redefining a sense of hope in the midst of despair
- ⇒ Working with family conflict as it relates to your personal journey
- ⇒ Helping to make peace with your life story; finding forgiveness and acceptance
- ⇒ Discovering resilience in the face of your life-limiting illness
- ⇒ Finding ways for you and your family to cherish memories (legacy work)
- ⇒ Defining meaning, purpose and value on your journey
- ⇒ Addressing any rituals that bring inner peace

*Patients and families may recognize some of the difficult issues caused by emotional/spiritual distress:*

- ⇒ Questioning the meaning of life and/or suffering
- ⇒ Feelings of anger or hopelessness; not feeling heard
- ⇒ Difficulty sleeping and/or stressful dreams
- ⇒ Breakdown in communication; inability to talk about what you're experiencing
- ⇒ Feelings of depression/anxiety; e.g. fear of death; reluctance to discuss mortality
- ⇒ Questioning beliefs or experiencing sudden doubts about spiritual or religious beliefs
- ⇒ Asking why this situation occurred; perhaps feeling punished
- ⇒ Needing spiritual help or guidance; e.g. feeling abandoned



Spiritual Care Ministry



In accordance with the Smoke-Free Ontario Act, all areas of the Hospital are smoke free, except as under the Exemption for Traditional Use of Tobacco by Indigenous Persons. Arrangements for this exemption can be requested by first speaking with your Nurse.

At Four Counties Health Services, we have two quiet spaces available.

One is located in the Emergency Area and the other in the Active Care Nursing Unit. Both are available 24/7.



# Our On Call Spiritual Care Team

Caring for the Human Spirit



**Rev. Abiel Khalema is a Retired United Church minister. An Associate Member of the Canadian Association of Spiritual Care, Registered Psychotherapist with the College of Registered Psychotherapists of Ontario (CRPO) and a Diplomate in logotherapy with Viktor Frankl Institute (USA).**

**Rev. Annalee Kerr is pastor for Bothwell United and Wabash United since 2002. She leads in worship each Sunday at the two churches and enjoys Zone Youth Club (youth from grades 4 to 8) and directing the choir at the Bothwell church. As a member of the chaplains at Four Counties Hospital, she & the choir take their turn to provide worship services at the hospital. We seek to serve as followers of Jesus Christ “with the joy of compassion”.**



**Jim Beattie has been engaged in Bible Teaching for the past 50 years associated with non-denominational church, known as Plymouth Brethren. Jim remains active in evangelism, expository Bible teaching, conference speaking and personal counselling. Studied Biblica Hebrew and Greek language translation at U of Windsor and Heritage College and Seminary**

**Cheryl Bolton is an ordained minister in the United Church of Canada. My pastoral charge Glencoe/ Appin is a two point charge within the United Church of Canada. Both churches are located within the municipality of Southwest Middlesex.**



# Our On Call Spiritual Care Team

Caring for the Human Spirit

**Deb Dolbear-Van Bilsen is a full-time minister in the Presbyterian Church in Canada in the local communities of Glencoe and Wardsville. Volunteer Chaplain for the Legion Branch #583, Newbury. Deb was ordained in 1999. She is married with two teenagers..**



**Joan Golden a United Church Minister serving since 2015 Moraviantown United Church, Delaware Nation and also Oneida United Church, Oneida of the Thames. I am married to Rev. Richard Golden, we live in Melbourne. I have also served in Brussels and Ethel United Churches in Huron Country (2000-2005) and St. Andrew's United in St. Thomas, ON (2005-2015).**

**Richard Golden a United Church Minister serving communities of North Ekfrid and Melbourne since 2003 and Wardsville since 2008, married to Rev. Joan Golden, have 2 children, 2 grandchildren and 1 grandpuppy, grew up in the Kingsville area, worked several years for the Town of Kingsville, and have served as minister in Englehart, Charlton, Earlton and later Monkton**



**Rev. Amanda MacMillan has served Appin and Guthrie Melbourne Presbyterian Churches since 2002**